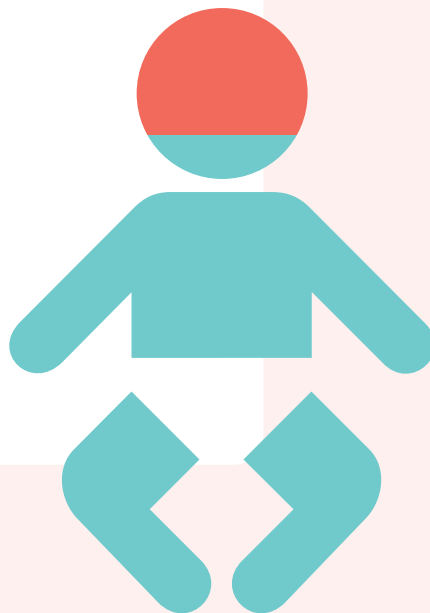


Family members were responsible for spreading the disease to the baby in up to **80% of cases** where it could be determined how an infant caught pertussis.<sup>1</sup>



1. Bisgard KM, Pascual FB, Ehresmann KR et al. Infant pertussis: who was the source? *Pediatr Infect Dis J.* 2004;23(11):985-9. <http://www.ncbi.nlm.nih.gov/pubmed/15545851>. Accessed June 24, 2015.